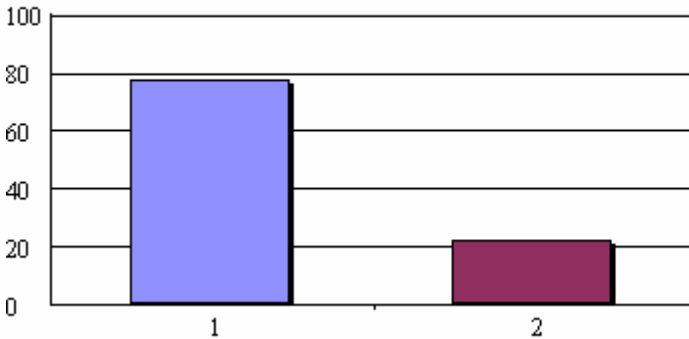


# Georgia Coalition to Prevent Underage Drinking Annual Survey Summary Results 5.27.09

1. Do you consider yourself to be a member of the Coalition?

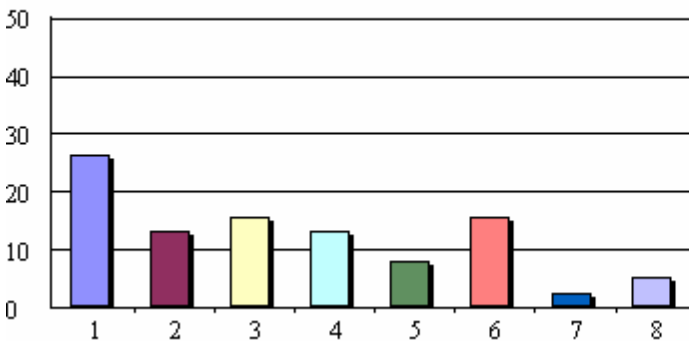


1. Yes	42	78%
2. No	12	22%
Total Responses:	54	
Mean: 1.22	Standard Deviation: 0.42	

Reasons given for why individuals do not consider themselves to be members:

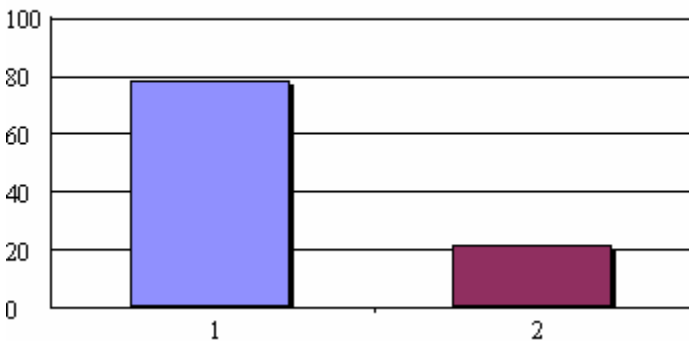
- I only receive emails about activities and otherwise am not involved at all.
- I have attended several meetings but do not participate actively as we have other agency representation on the coalition.
- I have never attended any of the meetings.
- My agency is represented on the Coalition by another staff member. We try to have only one staff member serving on any given workgroup, task force or coalition.
- No follow-up from planning stages. Inconsistency in goals from the point of contact person.
- I have not made the meetings due to travel restraints, however I follow their progress and appreciate the emails. I just wish there were a local coalition.
- Have not officially joined.

2. How many coalition meetings have you attended over the past 10 months?



1. 1	10	26%
2. 2	5	13%
3. 3	6	16%
4. 4	5	13%
5. 5	3	8%
6. 6	6	16%
7. 7	1	3%
8. 8+	2	5%
Total Responses:	38	
Mean: 3.47	Standard Deviation: 2.17	

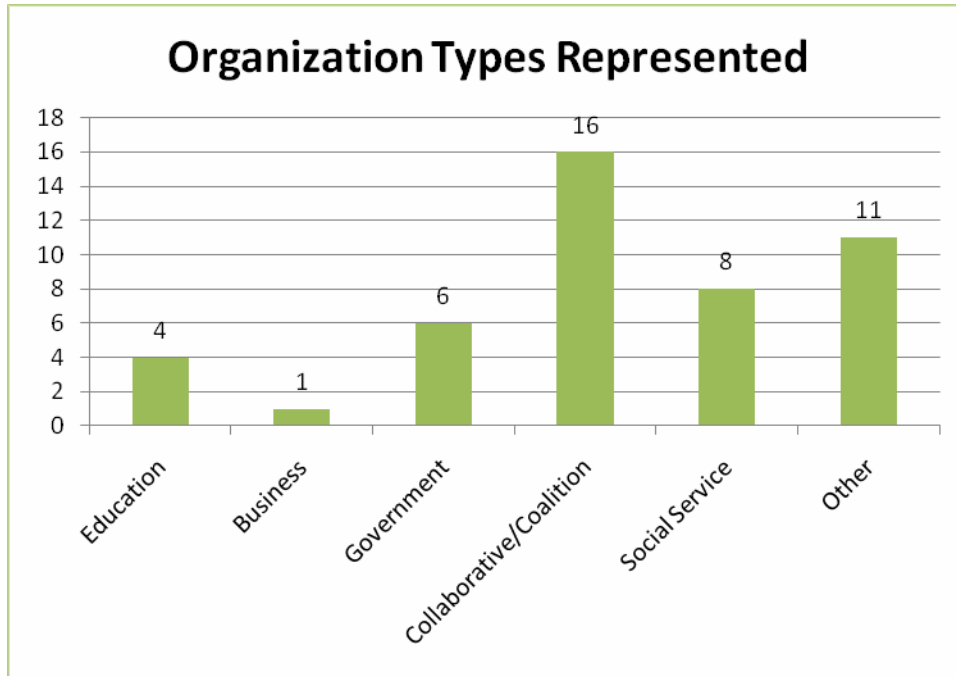
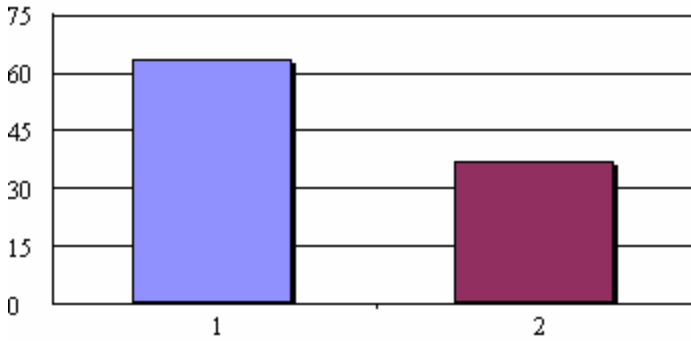
3. Are you attending coalition meetings as a part of your job (ie coalition attendance is seen as a work-related duty)?



1. Yes	32	78%
2. No	9	22%
Total Responses:	41	
Mean: 1.22	Standard Deviation: 0.42	

4. Are you serving as an organization/agency representative on the coalition?

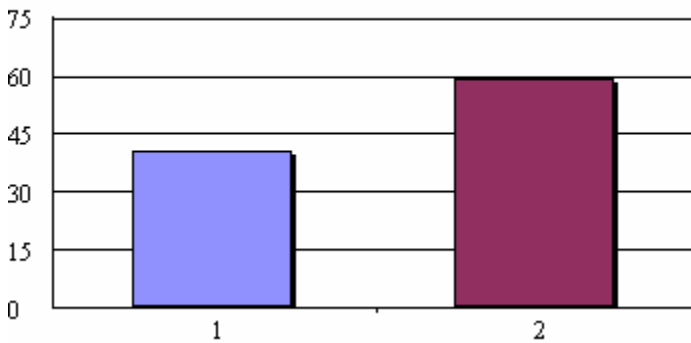
1. Yes 31 63%  
 2. No 18 37%  
 Total Responses: 49  
 Mean: 1.37 Standard Deviation: 0.49

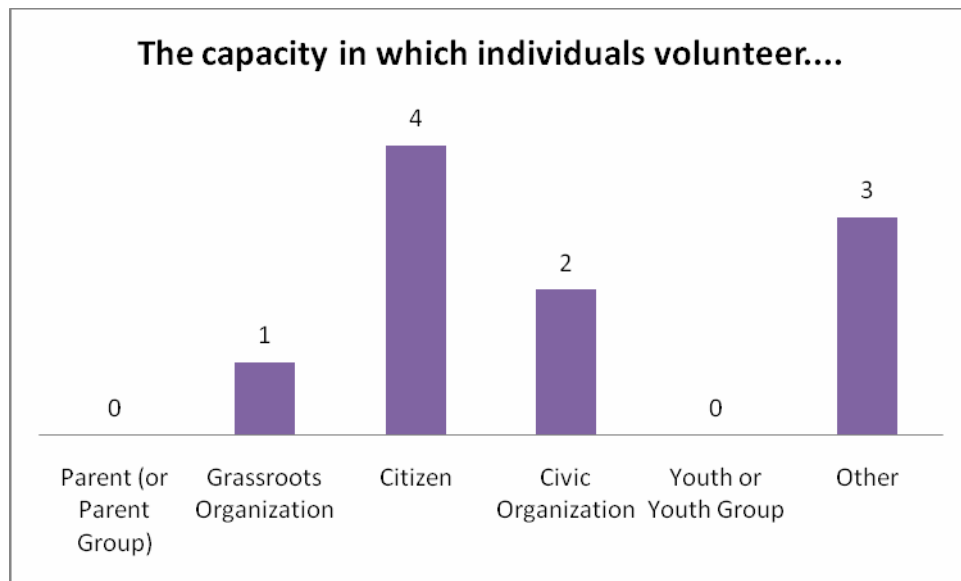


Respondents indicated the following organizations for the 'other' category: Nonprofit substance abuse Prevention Agency, faith-based organization, community-based organization, self, nursing, community-based after school program, non-profit, Family Connection, and PRC.

5. Are you serving as a volunteer on the coalition?

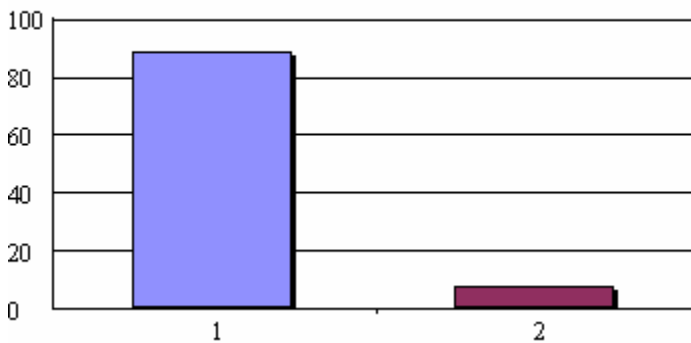
1. Yes 20 41%  
 2. No 29 59%  
 Total Responses: 49  
 Mean: 1.59 Standard Deviation: 0.50





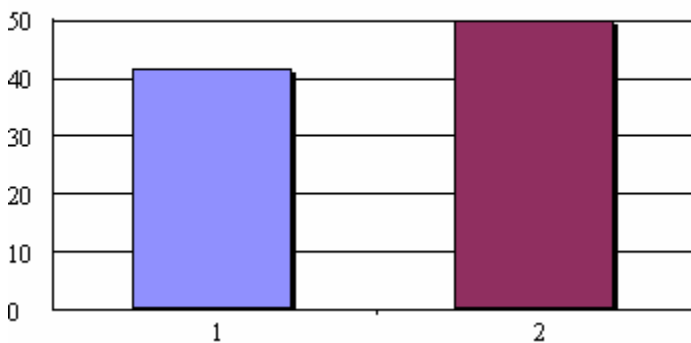
Those respondents who selected 'other', specified: community-based organization, non-profit, and Professional working with children and adolescents: Clinical Social Worker and Consultant to DHR.

6. In the past 12 months, have you served as a member of the coalition:



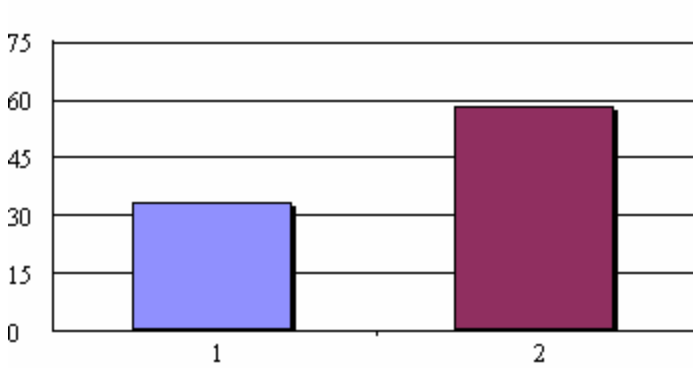
1. Yes	23	88%
2. No	2	8%
Total Responses:	26	
Mean: 1.15	Standard Deviation: 0.46	

7. In the past 12 months, have you served as a member of a committee:



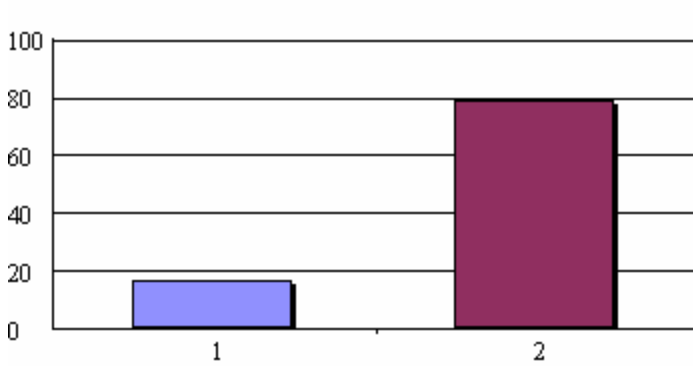
1. Yes	10	42%
2. No	12	50%
Total Responses:	24	
Mean: 1.67	Standard Deviation: 0.64	

8. In the past 12 months, have you helped organize coalition-sponsored activities:



1. Yes 8 33%  
 2. No 14 58%  
 Total Responses: 24  
 Mean: 1.75 Standard Deviation: 0.61

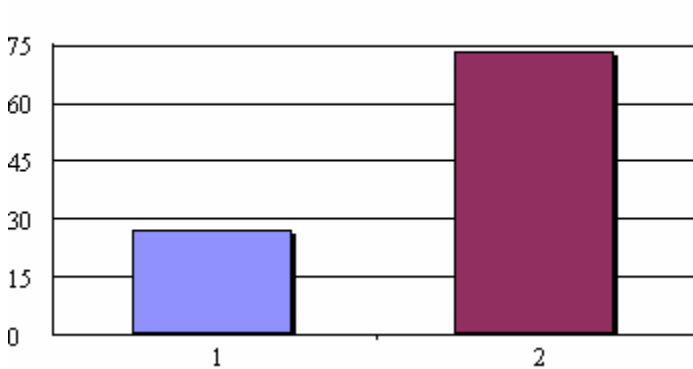
9. In the past 12 months, have you chaired a committee or served as a coalition officer:



1. Yes 4 17%  
 2. No 19 79%  
 Total Responses: 24  
 Mean: 1.88 Standard Deviation: 0.45

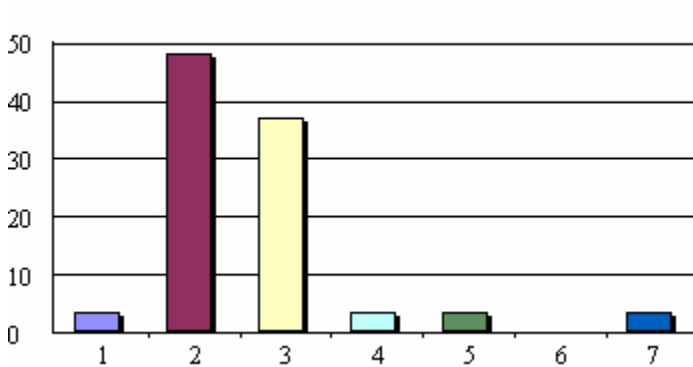
### DEMOGRAPHICS....

54. Gender:



1. Male 7 27%  
 2. Female 19 73%  
 Total Responses: 26  
 Mean: 1.73 Standard Deviation: 0.45

56. Racial group:



1. American Indian or Alaskan Native 1 4%  
 2. White 13 48%  
 3. Black or African-American 10 37%  
 4. Hispanic or Latino 1 4%  
 5. Asian 1 4%  
 6. Native Hawaiian or Pacific Islander 0 0%  
 7. Other: 1 4%  
 Total Responses: 27  
 Mean: 2.70 Standard Deviation: 1.17

Respondents indicated that their highest level of education was as follows: some college (4), a bachelor's degree (10), a graduate degree (13).